

A PART OF A P.U.D.

AMBER BAY

A PLAT OF A PORTION OF SECTION I, TOWNSHIP 47 SOUTH, RANGE 41 EAST AND ALSO BEING A REPLAT OF PARCEL C OF LAKES AT BOCA RATON — PHASE I AS RECORDED IN PLAT BOOK 48, PAGES 139 — 141 OF THE PUBLIC RECORDS OF PALM BEACH COUNTY, FLORIDA

JOHN A. GRANT, JR., INC.

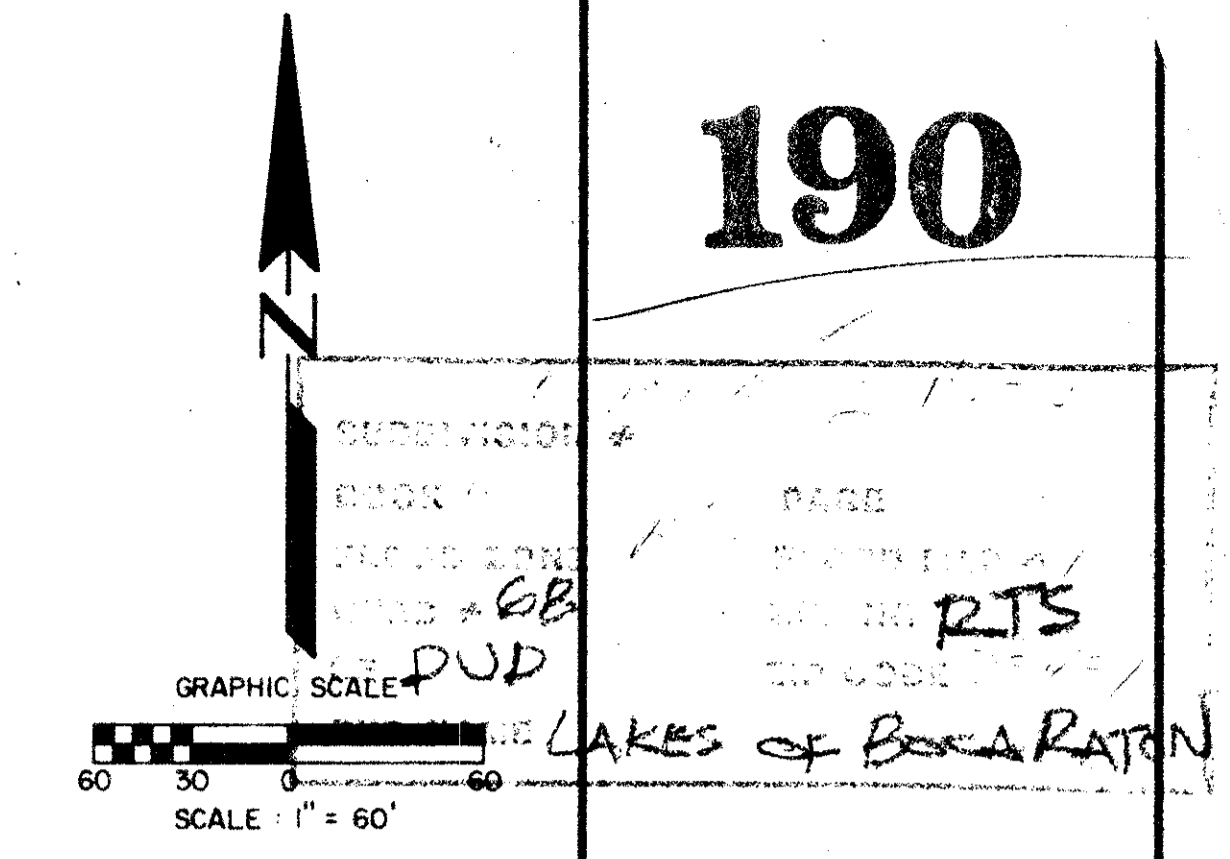
CONSULTING ENGINEERS AND LAND SURVEYORS

BOCA RATON, FLORIDA

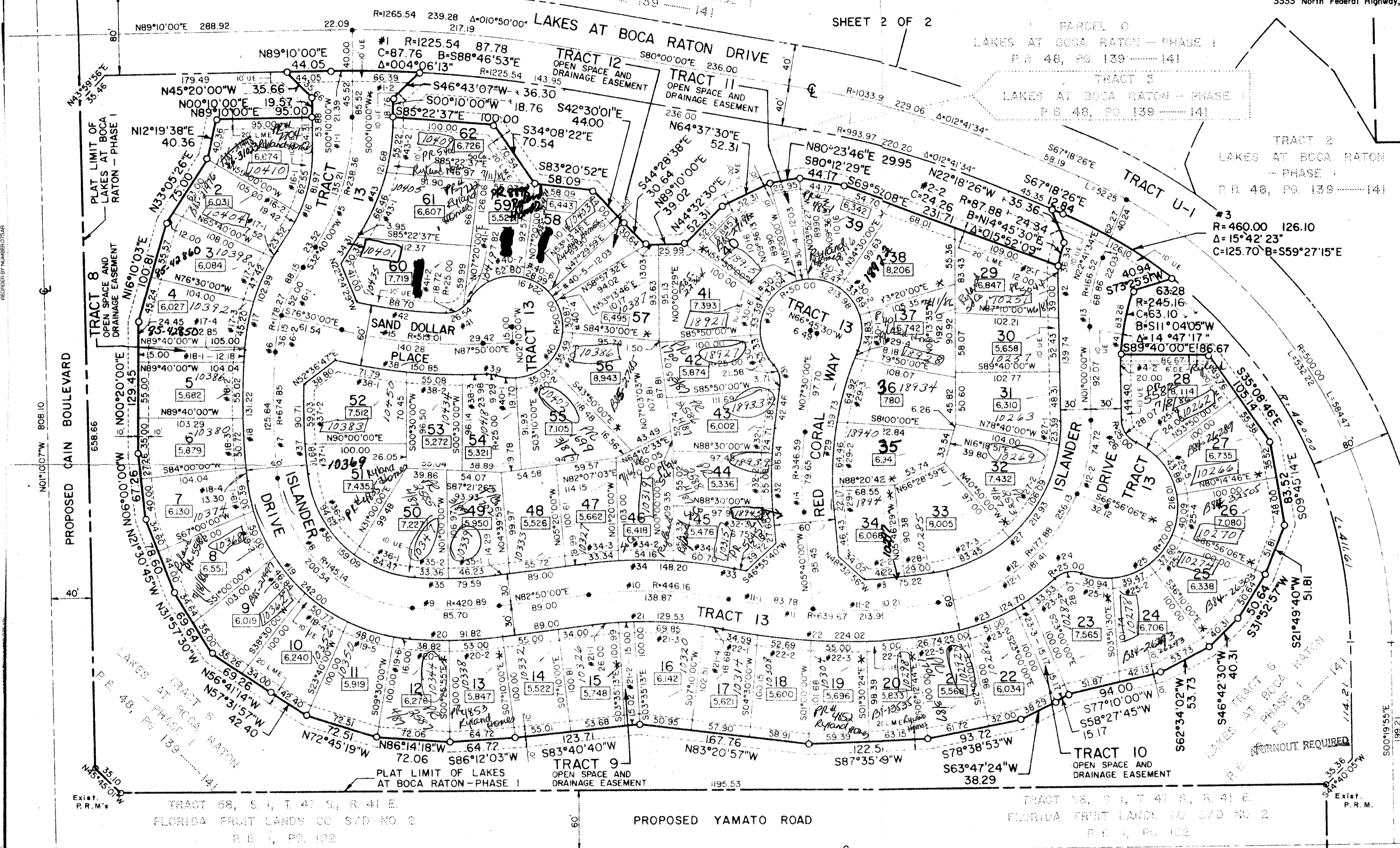
This instrument was prepared by: John A. Grant, Jr., John A. Grant, Jr., Inc. 3333 North Federal Highway, Boca Raton, Florida 33431.

APRIL 1984

SHEET 2 OF 2



190



CURVE TABLE

Table with 7 columns: NUMBER, RADIUS, ARC, DELTA, TANGENT, CHORD, CHORD-BEARING. Contains 50 rows of curve data for various lots and tracts.

CURVE TABLE

Table with 7 columns: NUMBER, RADIUS, ARC, DELTA, TANGENT, CHORD, CHORD-BEARING. Contains 12 rows of curve data.

CURVE TABLE

Table with 7 columns: NUMBER, RADIUS, ARC, DELTA, TANGENT, CHORD, CHORD-BEARING. Contains 16 rows of curve data.

NOTES: Bearings shown herein are based on a bearing of S00°59'03"E along the Range line (West line Sec 6, T 47 S, R 42 E) as obtained from the Section breakdown map - Sec I, T 47 S, R 41 E from Palm Beach County. No buildings or any kind of construction shall be placed on utility or drainage easements. No structures, trees or shrubs shall be placed on drainage easements. Approval of landscaping on utility easements, other than water and sewer, shall be only with the approval of all utilities occupying same.

- Legend for symbols: O - P.R.M. Indicates Permanent Reference Monument; P.C.P. Indicates Permanent Control Point; U.E. Indicates Utility Easement; D.E. Indicates Drainage Easement; L.M.E. Indicates Lake Maintenance Easement.

Handwritten text 'Amber Bay 48/190' and 'TURNOUT REQUIRED' overlaid on the curve table.